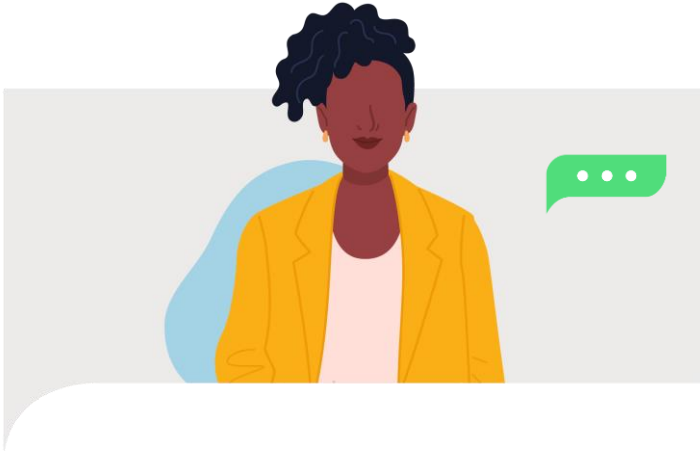


How to Become a Real Estate Appraiser

PHILADELPHIA, PA WORKSHOP

June 13, 2024 | 5:30– 7:30pm EDT



In this workshop, you'll be able to:

- See a step-by-step explanation of how appraisers develop opinions of value.
- Learn how to become an appraiser.
- Learn about opportunities to work flexible hours in the field or office, use cutting-edge technology, and pursue multiple career paths.
- Ask questions during discussion time with a panel of successful local appraisers.

[Register Now](#)

LOCATION

Lincoln University
School of Adult Continuing Ed.
3020 Market Street
Philadelphia, PA 19104

Free parking available. Refreshments will be served.

Learn about attractive career options in the world of real estate appraisal!

Learn about the vital role residential property appraisers play in homeownership by providing opinions of value that are used for mortgage lending.

On-Site Interviews!

- Attend the workshop and participate in an on-site interview with members of the ADI Scholarship Committee!
- The application below will ask you to enter your information, sign a release of information, sign a certification and disclaimer, upload your resume, and write an essay (300 word minimum).

[Apply Now](#)

SPONSORED BY

CONVERGENCE
UNITING FOR HOUSING AFFORDABILITY **PHILADELPHIA**

DIVERSE
MORTGAGE SERVICES

CHASE

ADI is a collaboration between the Appraisal Institute, Fannie Mae, Freddie Mac, and the National Urban League.

For more information on ADI, visit www.appraisalinstitute.org/the-appraisal-profession/appraiser-diversity-initiative

